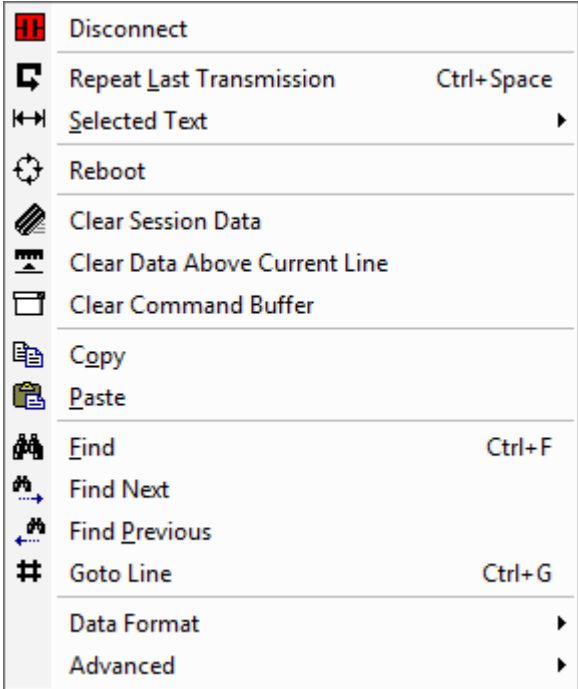
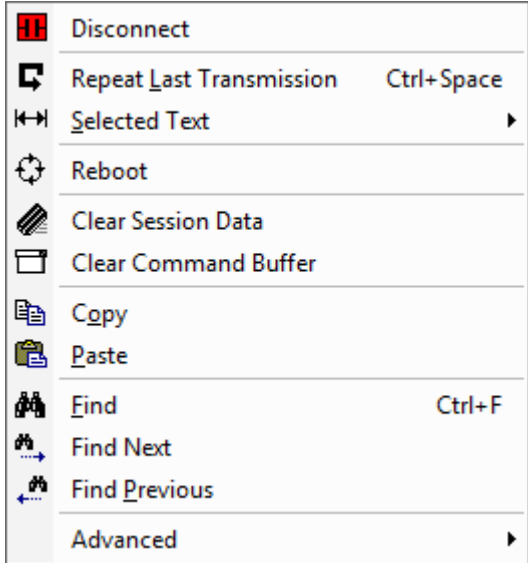


Session Context Menus

Session Context Menu

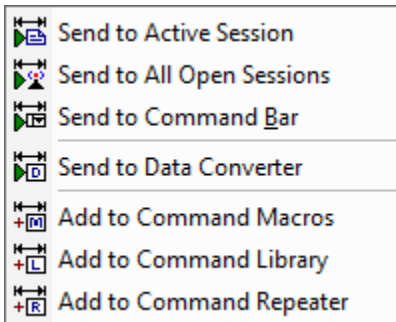
Right-click anywhere in the session data window to display the session context menu. The context menu items will vary slightly depending on the [session view mode](#).

Standard View Mode	Terminal Emulation View Mode
 <ul style="list-style-type: none"> Disconnect Repeat Last Transmission Ctrl+Space Selected Text Reboot Clear Session Data Clear Data Above Current Line Clear Command Buffer Copy Paste Find Ctrl+F Find Next Find Previous Goto Line Ctrl+G Data Format Advanced 	 <ul style="list-style-type: none"> Disconnect Repeat Last Transmission Ctrl+Space Selected Text Reboot Clear Session Data Clear Command Buffer Copy Paste Find Ctrl+F Find Next Find Previous Advanced

Name	Description
Connect or Disconnect	The <i>Connect</i> or <i>Disconnect</i> option will be displayed depending on the current session connection state.
Repeat Last Transmission	Re-transmits the last command/data issued to the active session.
Selected Text	Opens the selected text sub-menu.
Reboot	Transmits the custom reboot command sequence configured for the active session. The session connection will be disconnected and a based on a configured delay, the session will attempt to re-establish its connection.
Clear Session Data	Removes all data from the data window in the active session.

Clear Data Above Selected Line	Removes all data from the data window above the cursor position. (Note: <i>This option is only available in the Standard Terminal Mode.</i>)
<u>Clear Command Buffer</u>	Removes all buffered / cached commands from the <u>co</u> <u>mmand bar</u> in the active session.
Copy	Copies any selected text in the data window to the system clipboard.
Paste (to session)	Pastes text from the system clipboard directly to the connected session in the active session window.
Find	Prompts the user for text to search for in the session data window. After submitting the text query, Indigo will search for the text within the data.
Find Next	Attempts to find the next occurrence of the user provided search query text.
Find Previous	Attempts to find the previous occurrence of the user provided search query text.
Goto Line	Prompts the user for a line number and then jump the cursor directly to that line number. (<i>Only available in Standard Terminal Mode</i>)
<u>Data Format</u>	Opens the data format sub-menu.
<u>Advanced</u>	Opens the advanced (tools) session sub-menu.

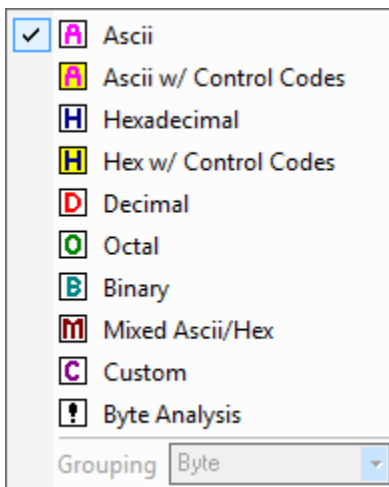
Session Selected Text Menu



Name	Description
Send to Active Session	Transmits the selected text to the current active terminal session.
Send to All Open Sessions	Transmits the selected text to all open terminal sessions.

Send to Command Bar	Copies the selected text to the command bar in the current active session window.
Send to Data Converter	Sends the selected text to the data converter tool where it will get converted into the selected data format.
Add to Command Macros	Copies the selected text and add the text as a new command macro .
Add to Command Library	Copies the selected text and add the text as a new command library command entry.
Add to Command Repeater	Copies the selected text and add the text as a new command repeater command entry.

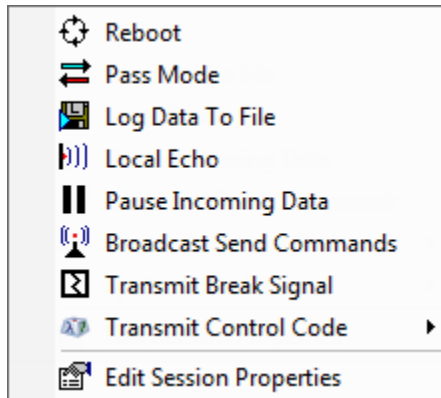
Session Data Format Menu



Name	Description
ASCII	Applies the selected data byte formatting to the active session.
ASCII w/ Control Codes	Applies the selected data byte formatting to the active session.
Hexadecimal	Applies the selected data byte formatting to the active session.
Hexadecimal w/ Control Codes	Applies the selected data byte formatting to the active session.
Decimal	Applies the selected data byte formatting to the active session.

Octal	Applies the selected data byte formatting to the active session.
Binary	Applies the selected data byte formatting to the active session.
Mixed ASCII/Hex	Applies the selected data byte formatting to the active session.
Custom	Applies the selected data byte formatting to the active session.
Byte Analysis	Applies the selected data byte formatting to the active session.
Byte Grouping	<p>Sets the byte size representation (<i>BYTE</i>, <i>WORD</i>, <i>DWORD</i>) for displaying bytes in the following formats:</p> <ul style="list-style-type: none"> • Decimal • Hexadecimal • Octal • Binary

Session Advanced (Tools) Menu



Name	Description
Reboot	<p>Transmits the custom reboot command sequence configured for the active session. The session connection will be disconnected and a based on a configured delay, the session will attempt to re-establish its connection.</p>
Pass Mode	<p>Opens the pass mode configuration dialog allowing to configure and enable serial pass mode. (Note: <i>This option is only available when connected via serial: RS232, RS422, RS485.</i>)</p>

<u>Log Data To File</u>	Opens the session logging tool to configure and start data logging for the active session.
<u>Local Echo</u>	If enabled, this option will print (<i>echo</i>) any data commands transmitted to the data window in the active session.
<u>Pause Incoming Data</u>	Pauses all inbound data from the connection on the active session window. (Note: <i>This option does not buffer data, while paused, any data received will be ignored.</i>)
<u>Broadcast Send Commands</u>	If this option is enabled all commands transmitted in the active session are also broadcast and transmitted to all other open sessions.
<u>Transmit Break Signal</u>	Transmits a BREAK signal to the configured serial port in the active terminal session. (Note: <i>This option is only available when connected via serial: RS232, RS422, RS485.</i>)
<u>Transmit Control Code</u>	Opens the control code sub-menu. The selected control code will be transmitted to the active session.
<u>Session Properties</u>	Opens the session properties configuration user interface for the active session.