

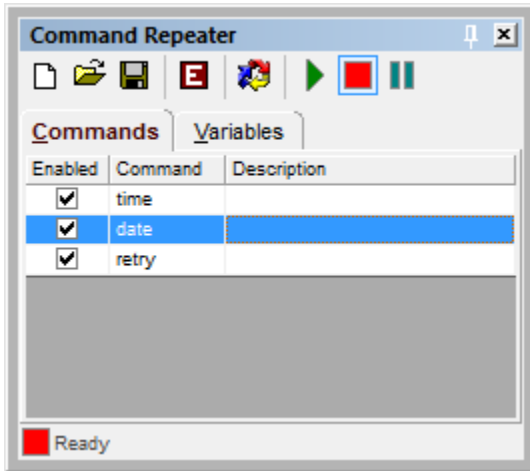
Command Repeater

Overview

Indigo supports a *Command Repeater* widget tool that allows you to define collections of commands and variables that you can use to send repeated commands to a connected device/host.

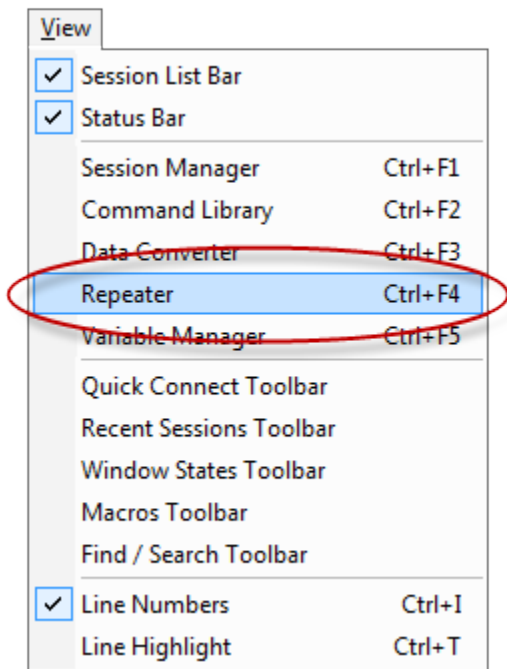
This is particularly useful if you want to send one or more commands repeatedly for testing or for querying a device/host.

You can also include dynamic variables in the repeated commands where the variable substitution can be updated via a mathematical expression on each repeat cycle.



View Menu

The *Command Repeater* widget can be displayed using the [View Menu](#).

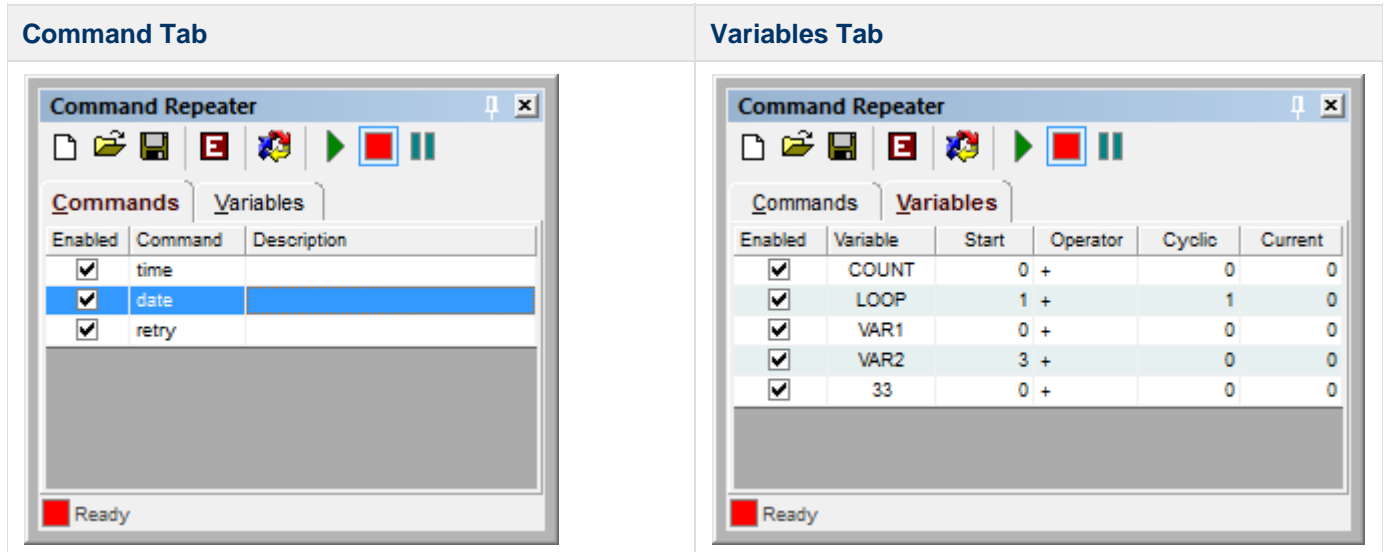


Widget Docking, Pinning, Re-sizing




Widget docking, pinning, re-sizing, etc information is listed [here](#).







User Interface

The *Command Repeater* user interface consists of a grid listing of commands and variables with a single options toolbar and a status bar.

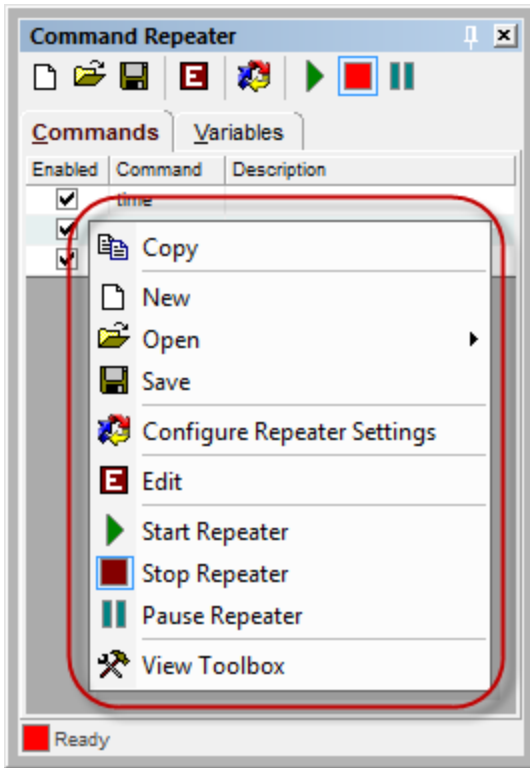


The *Command Repeater* widget options are listed below.

	Name	Description
	New	This option will prompt the user to create a new command repeater data file.
	Open	This option will prompt the user to select an existing command repeater data file. When a file is selected the <i>Command Repeater</i> widget will refresh and display the contents of the newly selected file.
	Save	This option will prompt the user to save the current command repeater data file. (The current command repeater data file is automatically saved when the Indigo application is closed.)

	Edit	<p>This option will switch the <i>Command Repeater</i> widget into edit mode. Edit mode will allow adding and editing commands on the command tab.</p> <div data-bbox="1094 331 1442 638" style="border: 1px solid green; padding: 5px;"> <p> Tip</p> <p>Existing variable replacement values can be edited even when not in edit mode.</p> </div>
	Configure	<p>This option will open the <i>Command Repeater</i> run-time settings</p>
	Start	<p>This option will start/resume sending commands from the <i>Command Repeater</i> to the active terminal session.</p>
	Stop	<p>This option will stop sending commands from the <i>Command Repeater</i> to the active terminal session.</p>
	Pause	<p>This option will pause/resume sending commands from the <i>Command Repeater</i> to the active terminal session.</p>

The *Command Repeater* widget also supports a right-click context menu that provides the same options.



(The *View Toolbox* option will show and hide the toolbar in the *Command Repeater* widget.)






Edit Mode User Interface

When in the edit mode, the *Command Repeater* user interface will include a few more toolbar options and allow editing of the commands in the data grid.

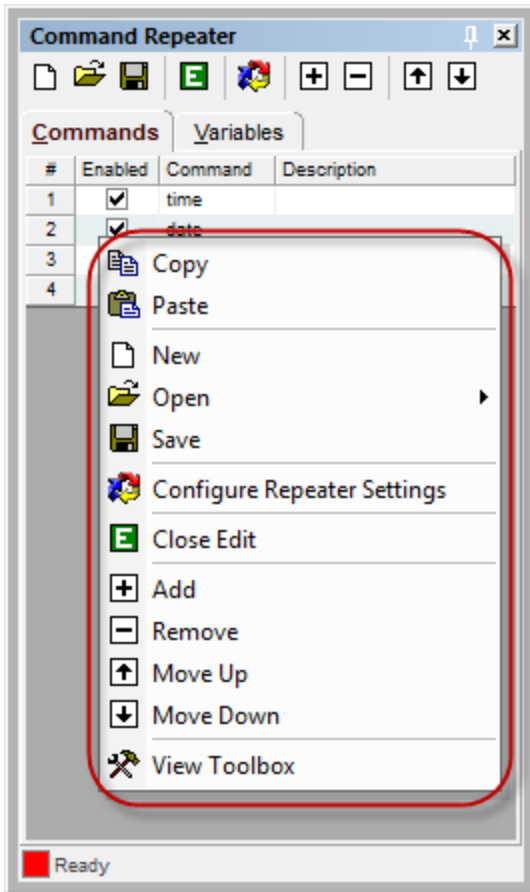
Command Tab				Variables Tab						
#	Enabled	Command	Description	#	Enabled	Variable	Start	Operator	Cyclic	Current
1	<input checked="" type="checkbox"/>	time		1	<input checked="" type="checkbox"/>	COUNT	0	+	0	
2	<input checked="" type="checkbox"/>	date		2	<input checked="" type="checkbox"/>	LOOP	1	+	1	
3	<input checked="" type="checkbox"/>	retry		3	<input checked="" type="checkbox"/>	VAR1	0	+	0	
4	<input type="checkbox"/>			4	<input checked="" type="checkbox"/>	VAR2	0	+	0	
				5	<input type="checkbox"/>		0	+	0	

The additional *Command Repeater* widget options exposed in edit mode are listed below.

	Name	Description


	Exit Edit Mode	This option will exit the editing mode and return to run-time mode.
	Insert	Insert a new command row or variable replacement row above the current selected row depending on which tab is selected.
	Remove	Remove the selected command row(s) or variable replacement row(s) depending on which tab is selected. <i>(Note that the entire row must be selected. Click the numbered cell to select an entire row.)</i>
	Move Up	Move the selected command row(s) or variable replacement row(s) up one position in the listing depending on which tab is selected. <i>(Note that the entire row must be selected. Click the numbered cell to select an entire row.)</i>
	Move Down	Move the selected command row(s) or variable replacement row(s) down up one position in the listing depending on which tab is selected. <i>(Note that the entire row must be selected. Click the numbered cell to select an entire row.)</i>

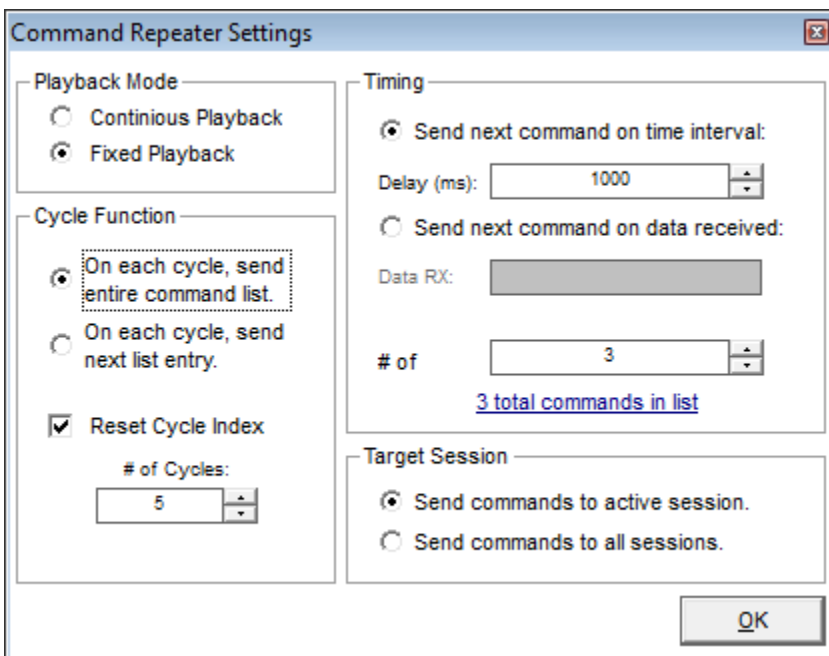
The *Command Repeater* widget also supports a right-click context menu that provides the same options.



(The *View Toolbox* option will show and hide the toolbar in the *Command Repeater* widget.)

Run-time Settings

The *Command Repeater* includes run-time configuration options to determine the repeater behavior. Use the  *Configure Repeater Settings* option to access this dialog.



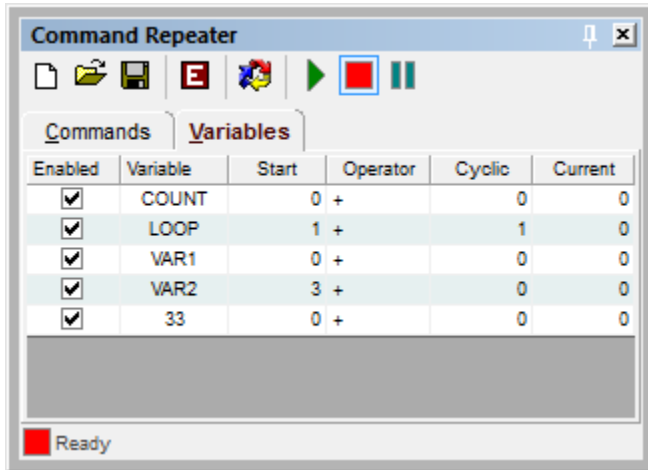
Playback Mode	
Continuous Playback	If this option is selected, the <i>Command Repeater</i> will iterate over the defined command listing and then continually start over and repeat the listing.
Fixed Playback	If this option is selected, the <i>Command Repeater</i> will iterate over the defined command listing once and then stop.
Cycle Function	
On each cycle, send entire command list	If this option is selected, the <i>Command Repeater</i> will iterate over the defined command listing and transmit all the commands during each repeater cycle.
On each cycle, send next list entry	If this option is selected, the <i>Command Repeater</i> will iterate over the defined command listing and transmit only one command during each repeater cycle.
Reset Cycle Index	If this option is selected, the <i>Command Repeater</i> will reset the repeat cycle index counter when the targeted number of repeat cycles have been reached.
Number of Cycles	If the <i>Reset Cycle Index</i> option is selected, then this field will be used to define the number of cycles at which to reset the repeat cycle index count.
Timing	
Send next command on time interval	If this option is selected, the <i>Command Repeater</i> will initiate the repeater cycle based on a user defined time interval.
Delay (ms)	If the <i>Send next command on time interval</i> option is selected, then this field will define the number of milliseconds for the time cycle delay interval.
Send next command on data received	If this option is selected, the <i>Command Repeater</i> will initiate the repeater cycle only over having received a specific target data string.
Data RX	If the <i>Send next command on data received</i> option is selected, then this field will define the target received data string to watch for.
Number of	If the <i>Fixed Playback</i> option is selected, then this field will be provided to define the number of repeat cycles the <i>Command Repeater</i> should invoke. (Note that if the <i>reset cycle index</i> option is enabled, then it could affect the total number of cycles that will be repeated.)
Target Session	
Send commands to active session	If this option is selected, the <i>Command Repeater</i> will transmit its data commands to only the selected/active terminal session.

Send commands to all sessions

If this option is selected, the *Command Repeater* will transmit its data commands to all open and connected terminal sessions.

Variable Cycling

The Command Repeater can perform a simple mathematical equation on a variable expression on each repeater cycle.



The following fields for a replacement variable row defines the variable properties and mathematical equation properties.

Name	Description
Enabled	This option allows you to enable/disable specific variables.
Variable	This field defines the variable replacement name/token. To embed a variable in command data, please see Command Variable Replacement
Start	This field defines the seed value or initiating start value that the variable will be assigned when the <i>Command Repeater</i> cycle starts. The variable value will always be reset to this start value when the <i>Command Repeater</i> is re-started.
Operator	This field defines the math operation to perform on each repeater cycle. The <i>Command Repeater</i> can perform addition, subtraction, multiplication, and division.
Cyclic	This field defines the operand value to use in the equation on each repeater cycle.
Current	This field displays the current value derived from the equation after each cycle.

The mathematical equation is applied to each variable on each repeater cycle .

Expression

```
CURRENT = START  
  
FOR EACH CYCLE  
{  
  CURRENT = CURRENT [+|-|*|/] CYCLIC  
}
```

✓ Tip

You can pause the *Command Repeater* and modify a variable's current value, operator, cycle operand, etc. and resume the repeater cycle.

✓ Tip

You can also use variables defined in the [Variable Manager](#) with commands listed in the *Command Repeater*.

Double-Click to Send

You can double-click a record in the commands tab of the *Command Repeater* widget and the command text will be transmitted to the connected device/host in the active terminal session.

Drag & Drop

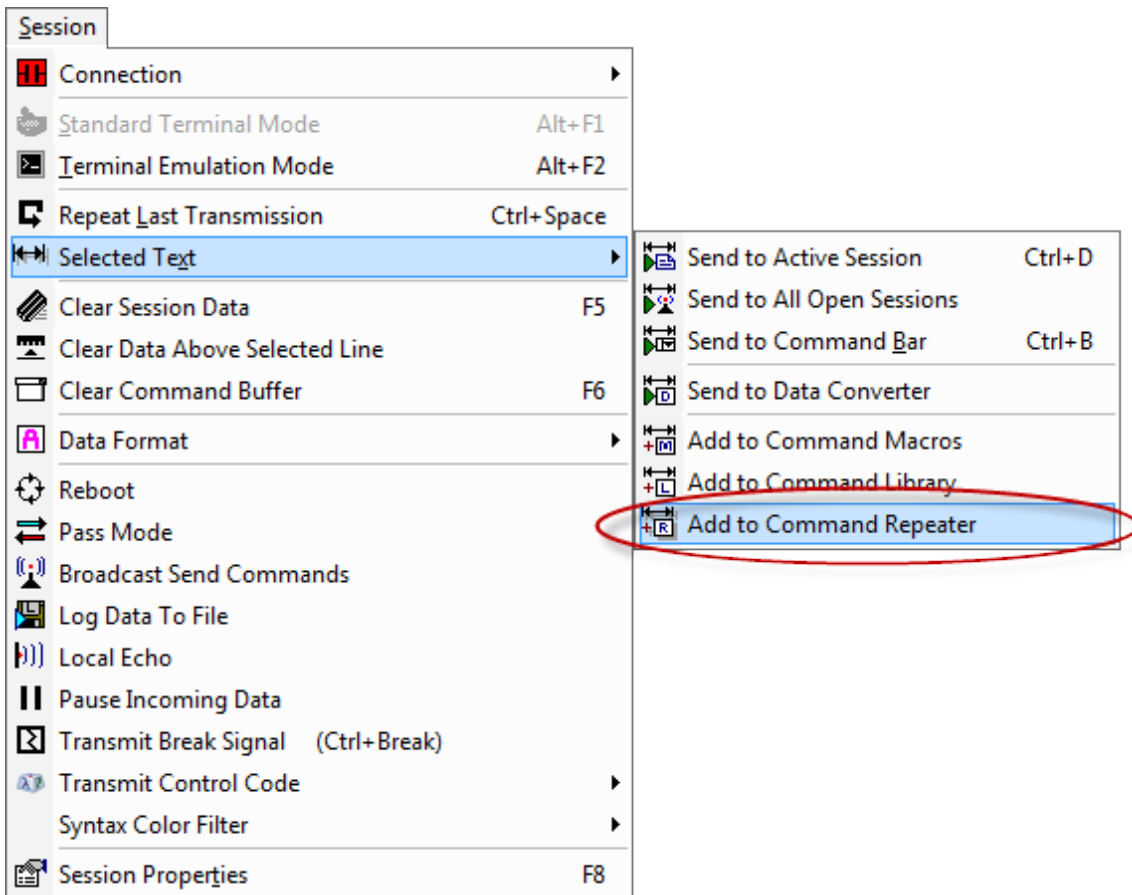
The *Command Repeater* widget supports drag-and-drop.

You can select a command record in the command tab of the *Command Repeater* widget and drag the entry to the [command bar](#) to stage the command text.

Session Menu

You can select a block of text in the session data window and then use *Add to Command Repeater* option in the [session menu](#) to add the selection as a new command record in the *Command Repeater* widget.

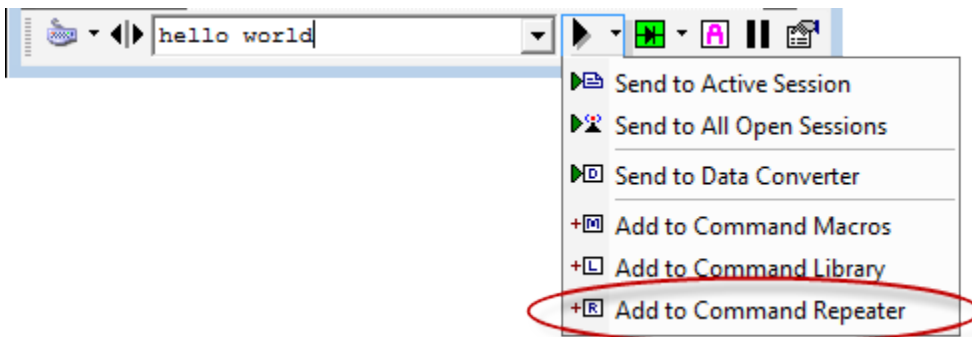
(The new command record will only be added if it does not match an existing record.)



Session Toolbar

You can enter command text into the [command bar](#) and then use [session toolbar](#) to add the selected text as a new command record in the *Command Repeater* widget.

(The new command record will only be added if it does not match an existing record.)



Session Context Menu

You can select a block of text in the session data window and then use the right-click session [context menu](#) to add the selection as a new command record in the *Command Repeater* widget.

(The new command record will only be added if it does not match an existing record.)

